

Solo and Small Practice Section

OCTOBER 1, 2021 – SEPTEMBER 30, 2022

The **SOLO AND SMALL PRACTICE SECTION** serves as a clearinghouse for qualified law practice management and technology information for solo and small practice attorneys to support them in ethically conducting a profitable and satisfying business. The Section provides education for its members in areas of common interest and provides opportunities for members to become better acquainted with other members.

SECTION ACCOMPLISHMENTS

6 Mini-CLEs

1 Co-sponsored CLE w/WSBA

1 New Lawyer Outreach Event/Benefit

\$1,950 Scholarships/Donations/Grants

TOTAL MEMBERSHIPS

916

as of Dec. 31, 2022

Young Lawyers 11.46%

WA COUNTY

King County 51.97%

Peninsula & Southern WA 13.65%

Central & Eastern WA 14.30%

Northern WA 9.28%

FIRM TYPE

Public Sector/Government 2.84%

In-House 3.82%

Solo 56.66%

Small Firm (2 - 10) 36.14%

Medium Firm (11 - 50) 4.91%

Large Firm (51+) 1.97%

SECTION FINANCIAL REVIEW

Dues \$35.00

Total Revenue (actual) \$34,588.34

Total Expenses (actual) \$31,694.59

Total Fund Balance (actual) \$98,246.66

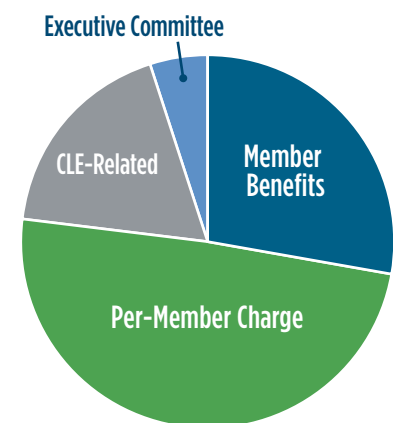
EXPENSES (ACTUAL)

Member Benefits \$8,824.17 27.84%

Per-Member Charge \$15,601.84 49.23%

CLE-Related \$5,722.00 18.05%

Executive Committee \$1,546.58 4.88%



HIGHLIGHTS OF THE YEAR

- Maintained membership close to 1,000 members.
- Produced six Mini-CLEs, which are free to our members. Each was excellently received with great feedback from members.
- Exceeded budget projections with Mini-CLEs, which have been more successful in reaching section members, with attendance far exceeding the attendance at full-day CLEs.
- Produced the Solo & Small Firm Conference in partnership with the WSBA and sponsored a reception.
- Continued to enhance content on the Section's WSBA webpages.
- Hosted several member events.